

Vandal Resistant Switch $\Phi 19\text{mm}$



Anti-Vandal IK09/ Sealed IP65

Illuminated And Non-Illuminated

Variety Of Colors

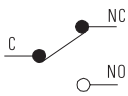
Momentary/ Latching

Momentary: Means that when you push Switch and then move your finger, the actuator will back to the original position;
Latching: Means that when you push Switch once it will change state and stay in this pushed-down position and will not come back to original position unless you push it again.

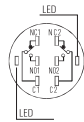
Order Code

Series	Actuator Options	Terminal	Function	Material Finish	Illuminated Options	Color	Color Voltage	Marking Options
L19A	F- Flat	Pin(2.8x0.5)blank	M- Momentary 1 1NO1NC 2 2NO2NC Z- Latching 1 1NO1NC 2 2NO2NC	S- Stainless Steel A- Anodized Aluminum	D- Dot R- Ring non-illum.blank	W- White Y- Yellow B- Blue G- Green R- Red O- Orange	6V 12V 24V 36V 110V 230V	Custom Markings Available

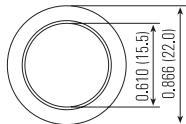
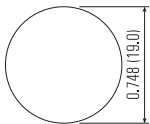
Operation



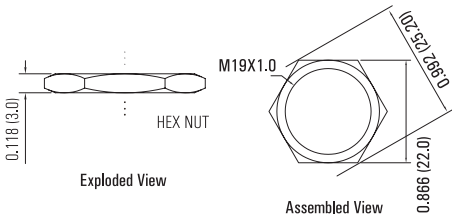
Description



Suggested Panel Cutout



Max. Panel Thickness: 0.394 (10.0)



Technical Data

Type	L19A-F	L19A-F/R	L19A-F/D
Illuminated Options	Non-Illuminated	Ring	Dot
Terminal	Pin (2.8X0.5)		
Max. Switch Rating	Ith:5A Ui:250VAC		
Contact Resistance	$\leq 50\text{m}\Omega$		
Insulation Resistance	$\geq 1000\text{m}\Omega$		
Dielectric Strength	2000VAC		
Operation Temp	$-20^{\circ}\text{C} \sim +55^{\circ}\text{C}$		
Mechanical Life	1,000,000 Cycles		
Electrical Life	50,000 Cycles		
Contact Material	Silver Alloy		
Torque	5 ~ 14Nm		
Operation Pressure	approx. 5N		
Protection	IP65/ IK09		
Material			
Actuator	Stainless Steel/ *Anodized Aluminum		
Body	Stainless Steel/ *Anodized Aluminum		
Base	PBT		
Type	LED		
Voltage	6V/ 12V/ 24V/ 36V/ 110V/ 230V		
Color	R G Y O B W		
Life	Approx, 40,000 hours		

Dimension

