

Vandal Resistant Switch $\Phi 16\text{mm}$



Anti-Vandal IK08/ Sealed IP65

Illuminated

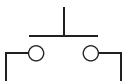
Momentary

Variety Of Colors

Order Code

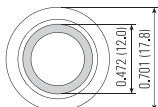
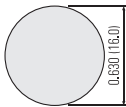
Series	Actuator Options	Terminal	Function	Material Finish	Illuminated Options	Color	Color Voltage	Marking Options
Ls16	F- Flat	Pin(2,0x0.5) blank	M- Momentary 1- 1NO	S- Stainless Steel A- Anodized Aluminum N- Nickel plated brass	D- Dot R- Ring Non-illuminated blank	W- White Y- Yellow B- Blue G- Green R- Red O- Orange	6V 12V 24V 36V 110V 230V	Custom Markings Available

Operation

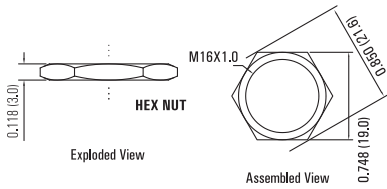


Switch terminals blank
LED terminals marked + and

Suggested Panel Cutout



Max. Panel Thickness: 0.394 (10.0)

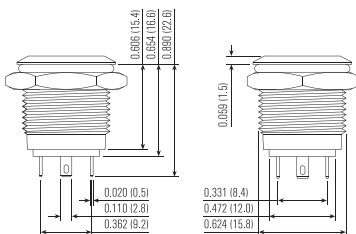


Technical Data

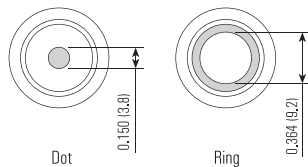
Type	Ls16-F	Ls16-F/R	Ls16-F/D
Illuminated Options	Non-Illuminated	Ring	Dot
Terminal	Pin (2.8X0.5)		
Max. Switch Rating	2A 36VDC		
Contact Resistance	$\leq 50\text{m}\Omega$		
Insulation Resistance	$\geq 1000\text{m}\Omega$		
Dielectric Strength	2000VAC		
Operation Temp	$-20^\circ\text{C} \sim +55^\circ\text{C}$		
Mechanical Life	1,000,000 Cycles		
Electrical Life	200,000 Cycles		
Contact Material	Silver Alloy		
Torque	5 ~ 14Nm		
Operation Pressure	approx. 3 ~ 5N		
Protection	IP65/ IK08		
Material			
Actuator	Stainless steel/ Nickel plated brass/ Anodized aluminum		
Body	Stainless steel/ Nickel plated brass/ Anodized aluminum		
Base	PBT		
Type	LED		
Voltage	6V/ 12V/ 24V/ 36V/ 110V/ 230V		
Color	R G Y O B W		
Life	Approx, 40,000 hours		

Current-limiting Resistance Configuration Table	Operating Voltage(U)		6V	12V	24V	36V	Formula $R = \frac{U \cdot U_e}{I_e}$
	R	Y	O	210 Ω , 1/4W	510 Ω , 1/2W	1.2k Ω , 3/4W	
	G	B	W	160 Ω , 1/4W	460 Ω , 1/2W	1.2k Ω , 3/4W	2.2k Ω , 1W

Dimension



Illuminated Options



Actuator Options

